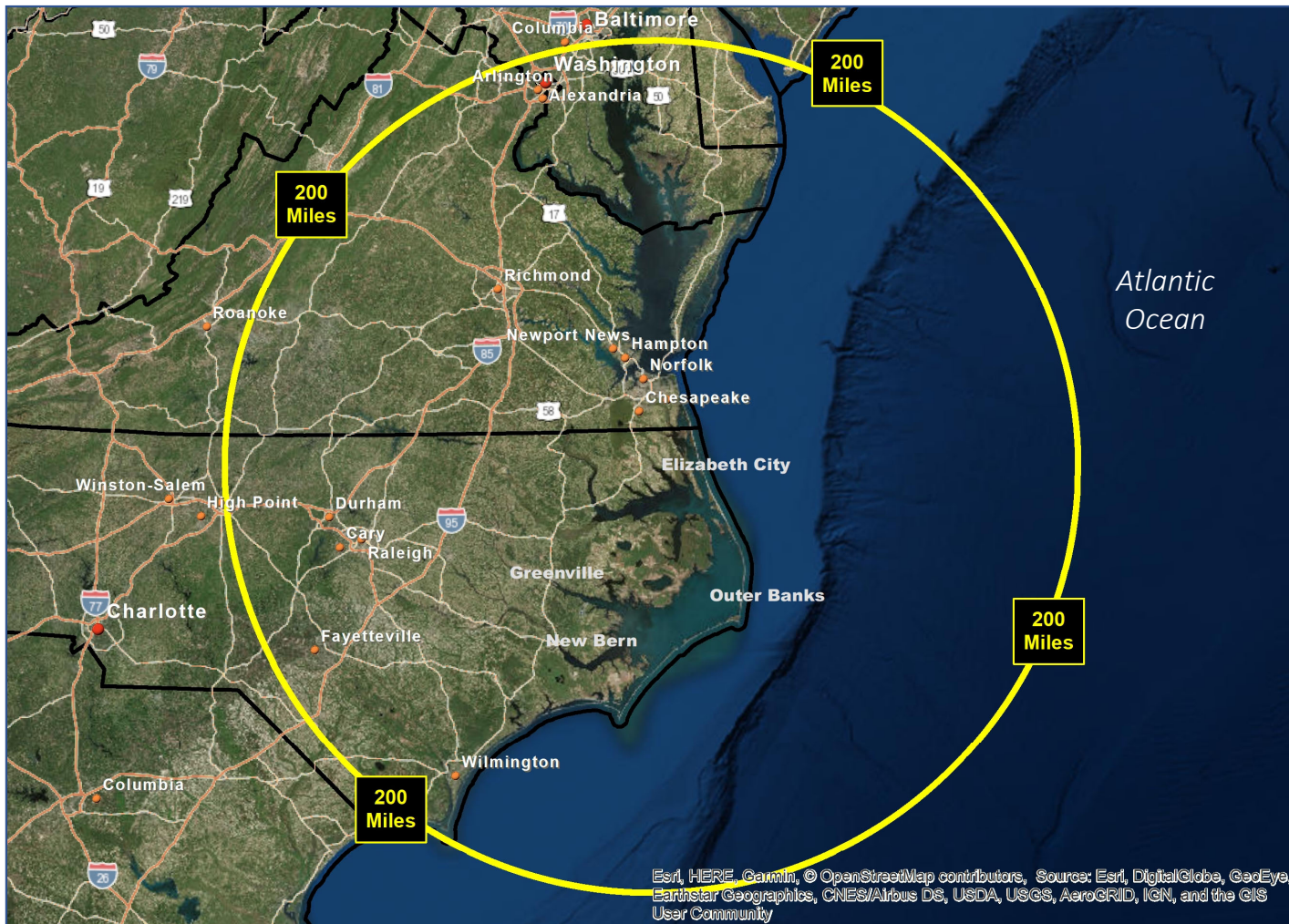


Proximity to Regional Markets



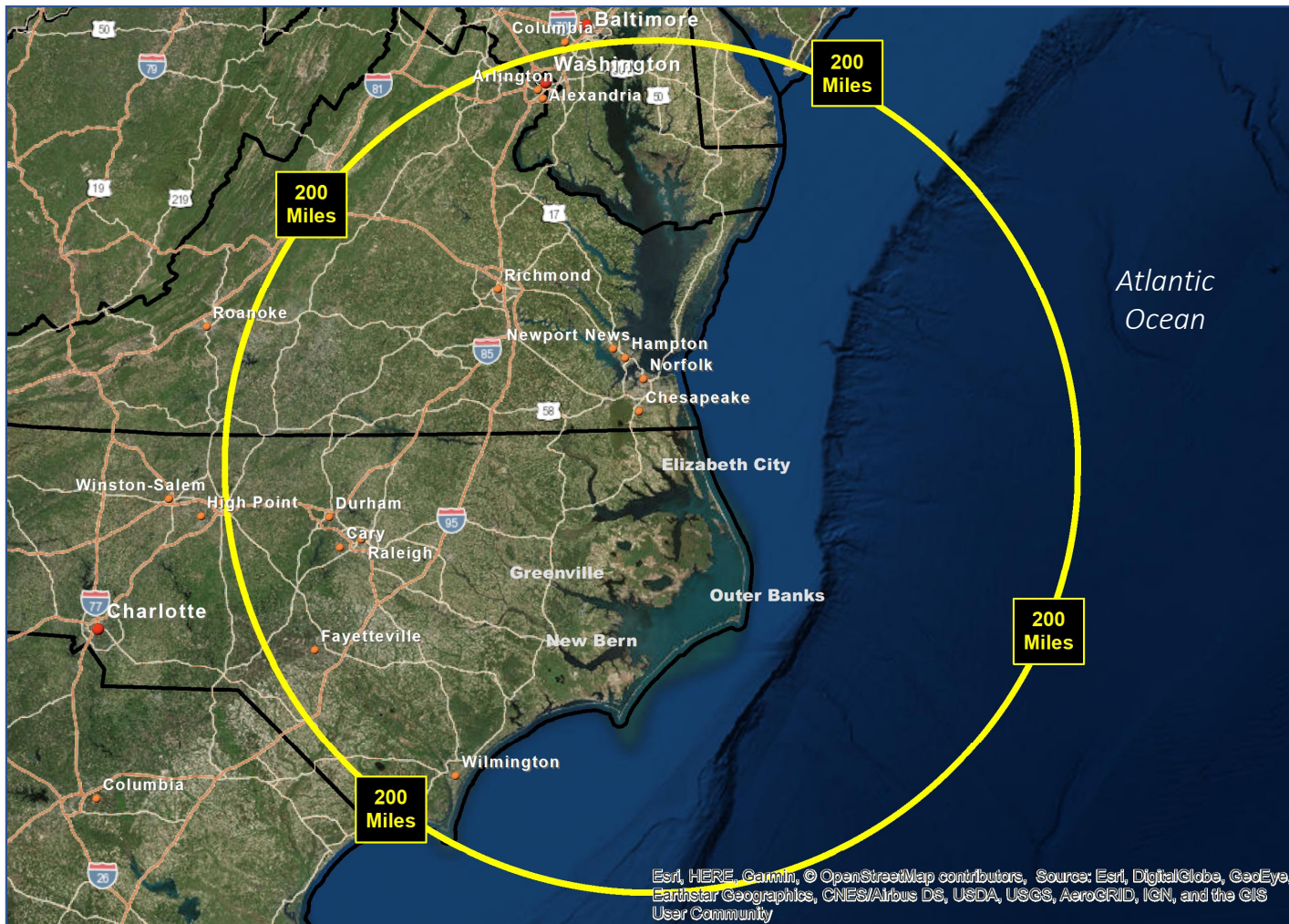
**Well Positioned
for Business and
Tourism!**

Drive Times

Washington DC	4h+
Richmond	2h+
Norfolk-VA Beach	<1h
Outer Banks	1h
Greenville	<2h
Raleigh-Durham	<3h
Wilmington	<4h

Esri, HERE, Garmin, © OpenStreetMap contributors, Source: Esri, DigitalGlobe, GeoEye, Earthstar Geographics, CNES/Airbus DS, USDA, USGS, AeroGRID, IGN, and the GIS User Community

Proximity to Regional Markets



Demographics - 200 Miles

Total Population (2018)

16M

Median Household Income

\$67K

Median Age

38

High School Diplomas of Higher

90%

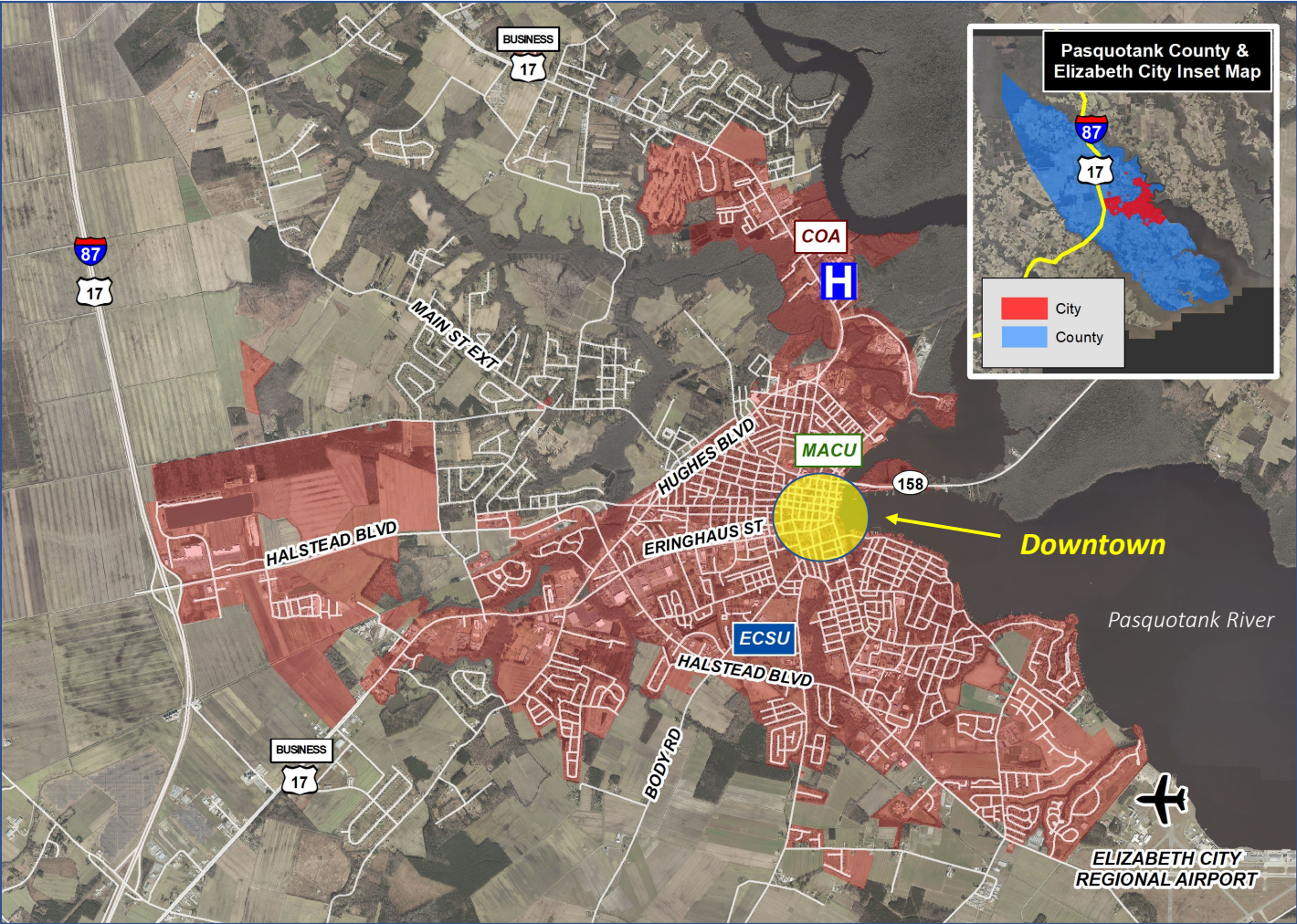
Bachelor Degrees or Higher

22%

Graduate Degrees or Higher

17%

Elizabeth City & Pasquotank County Demographics



	EC	PC
Population	18K	40K
Med. HH Income	\$34K	\$47K
Med. Age	33	38
High School Dip.	84%	86%
Bachelor Degrees	24%	20%
Graduate Degrees	8%	8%

Note:
 EC = City of Elizabeth City, NC
 PC = Pasquotank County, NC