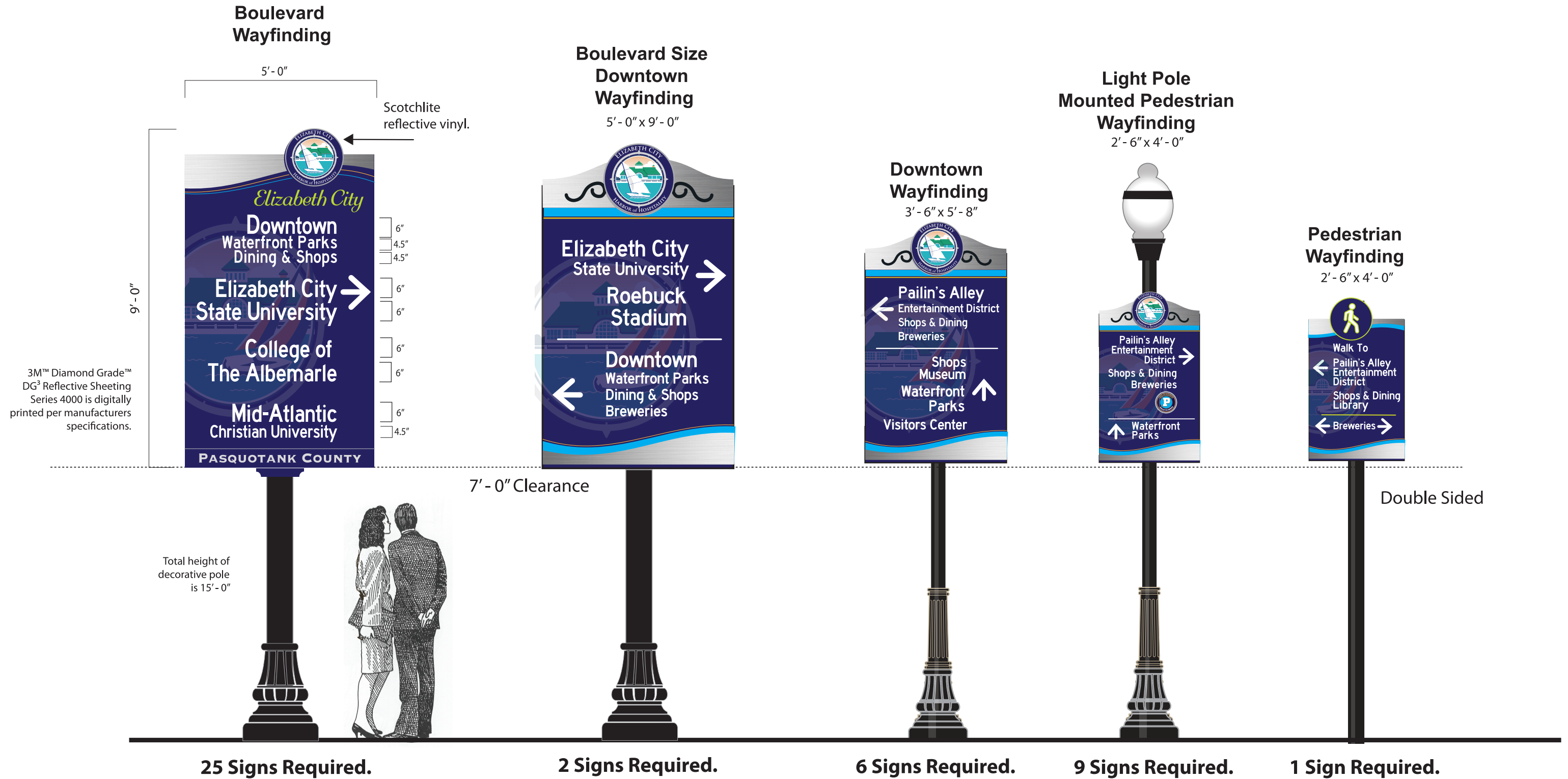


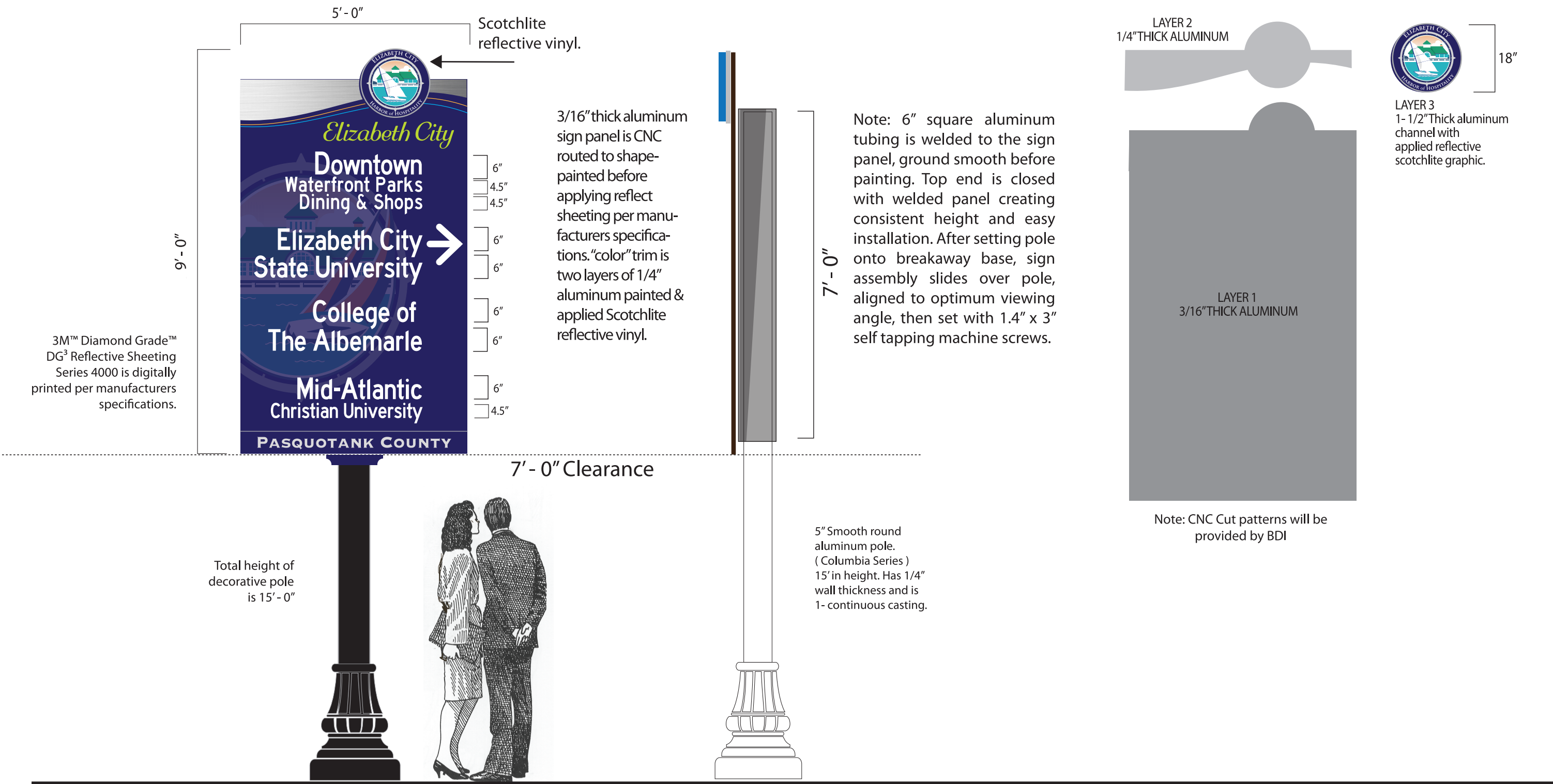


---

Town of Elizabeth City, NC  
Boulevard Wayfinding Program / Bid Package  
January 27, 2021



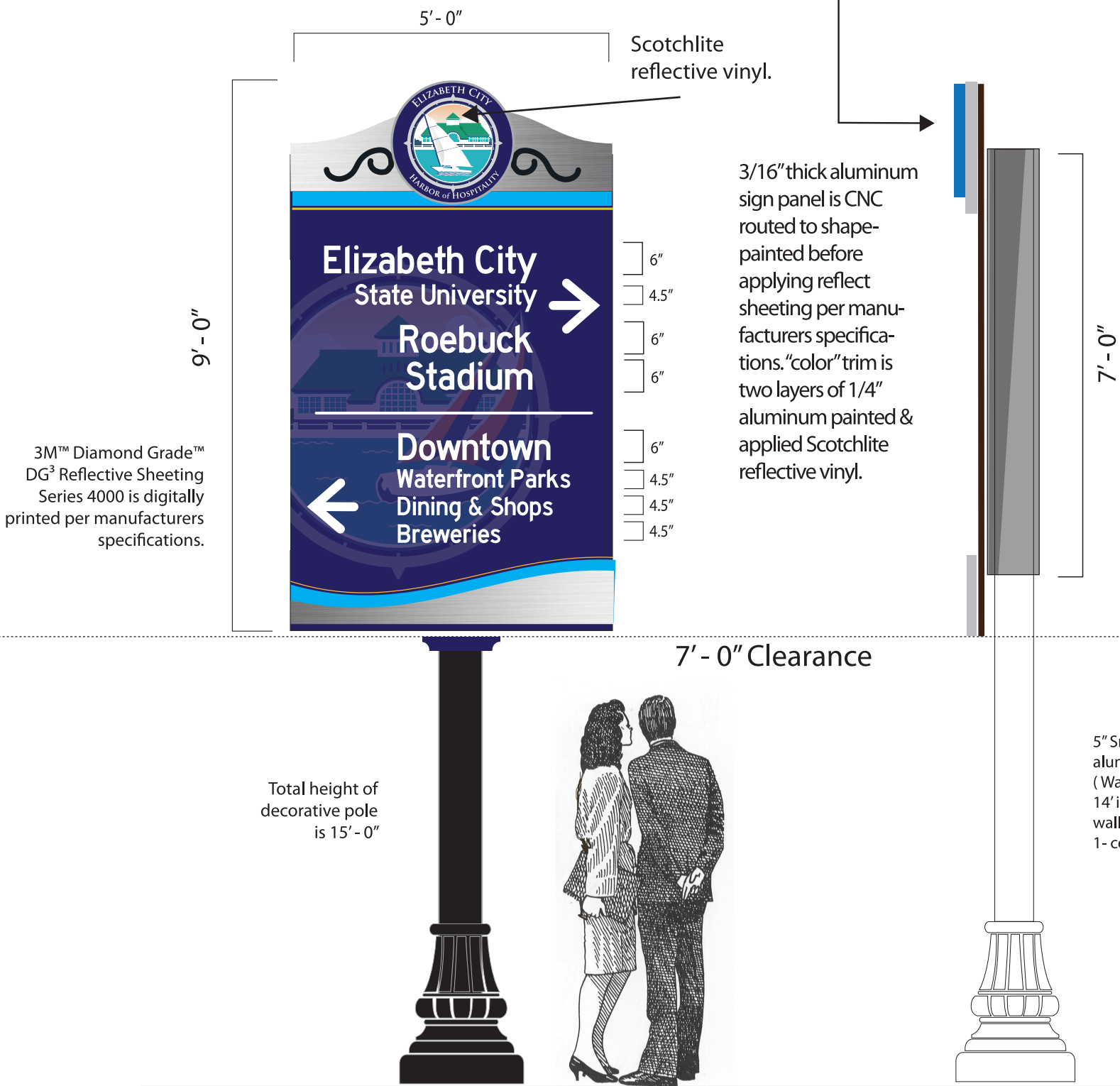




25 Signs Required.



"Green" trim is two layers of 1/4" aluminum with applied reflective vinyl.



Note: 6" square aluminum tubing is welded to the sign panel, ground smooth before painting. Top end is closed with welded panel creating consistent height and easy installation. After setting pole onto breakaway base, sign assembly slides over pole, aligned to optimum viewing angle, then set with 1.4" x 3" self tapping machine screws.

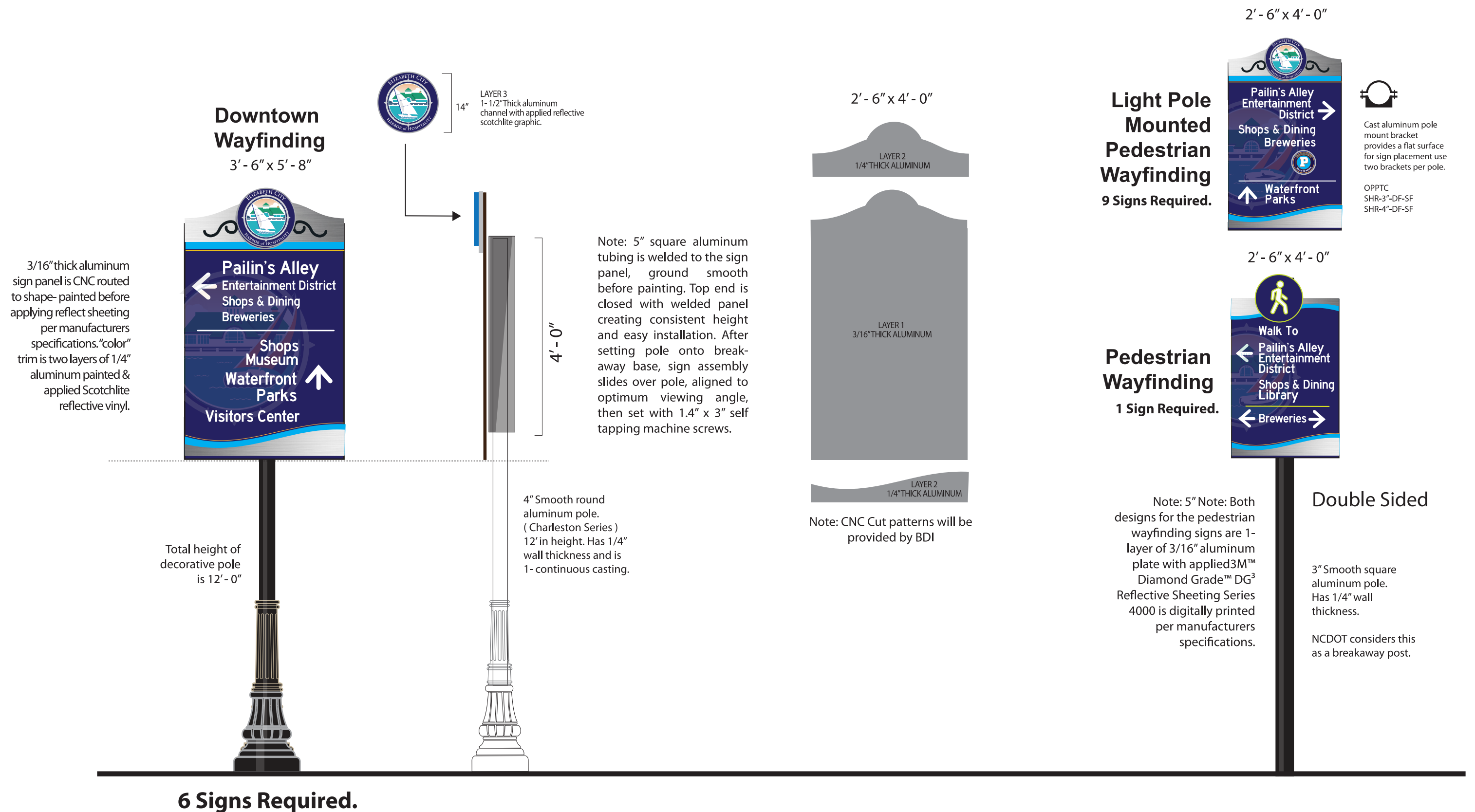


3 Signs Required.

Note: Final messaging may change slightly. BDI will provide full scale (ai) patterns for cutting and printing.



## Downtown Wayfinding / Sign Types





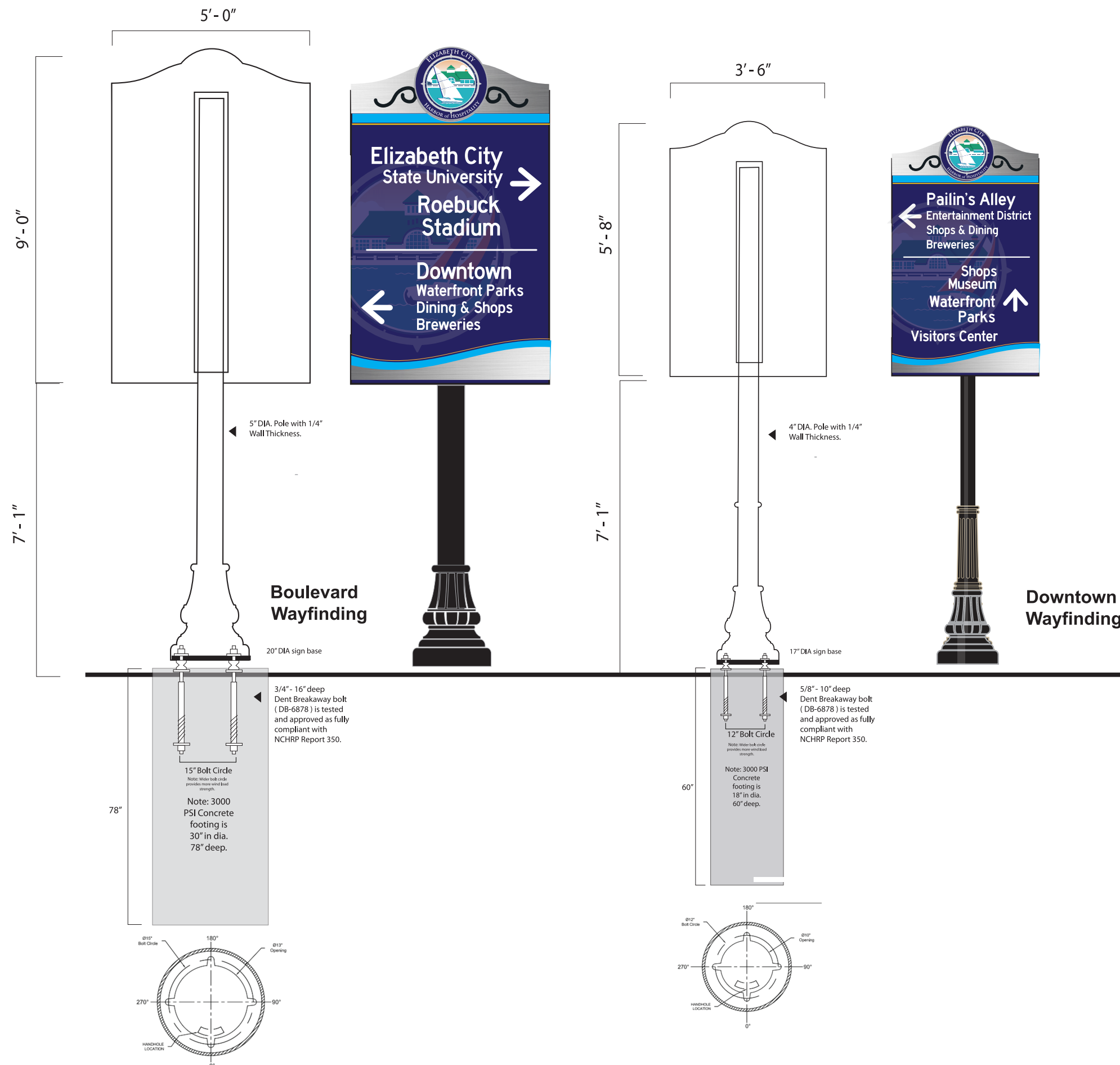
Safety and professional sign industry practices must be met regarding site location staking. Underground utility and cable locations performed at each site.

The performance of subsurface testing and utility location is wholly and solely the responsibility of the selected sign contractor. Should undesirable conditions be found, an alternate location for the sign should be selected as the first option. If no options for repositioning are available in the case of utilities, hydro boring can be an option. A change order must be approved before additional work begins.

All footings are to be poured as shown in engineers final wind load drawings following listed PSI grade concrete poured within a form 1" above grade with trowel formed top surface embedding the gravel and beveled edges unless otherwise specified.

Breakaway bolts will be pre-mounted to pole base template to assure proper alignment. Footings should cure at least 5 days before poles are mounted.

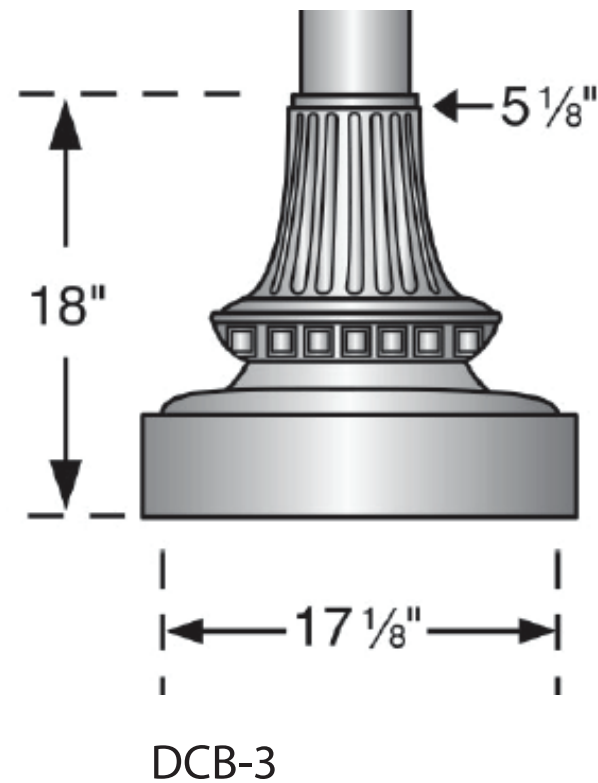
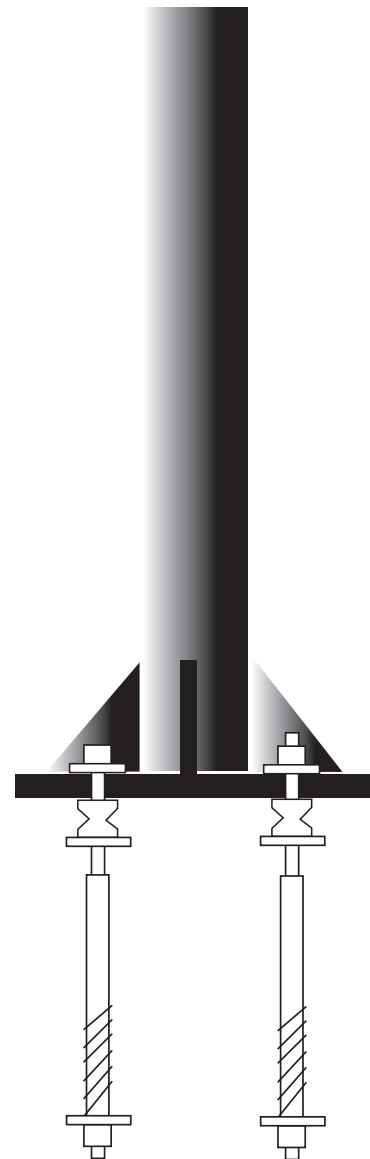
Sign installer must have advance knowledge of site conditions based on experience installing in the area. Minimum modifications to locations due to utilities are considered standard industry practice and are a part of the installation process. Site conditions needing additional adjustments above bid costs must be approved by the ECB representative submitting a change order.





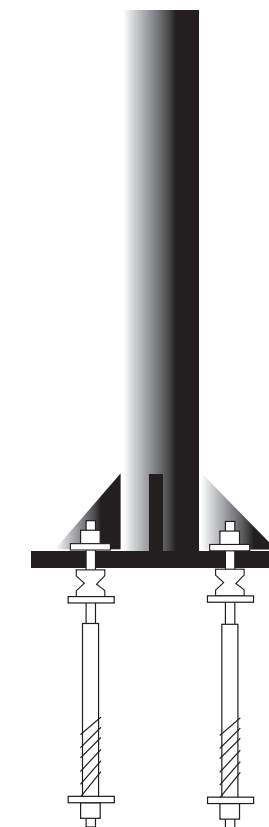
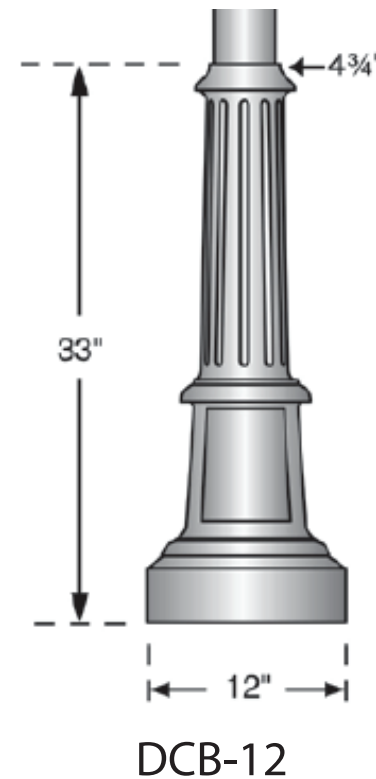
Note: 5" OD x 3/8" Wall  
6061-T6 Aluminum  
Round Column

17" DIA. - 1/2" Thick base plate  
supported with 2" x 2" gussets



Note: 4" OD x 3/8" Wall  
6061-T6 Aluminum  
Round Column

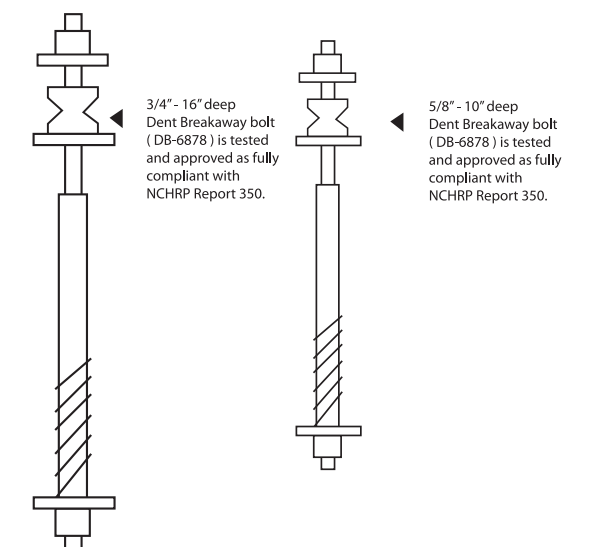
10" DIA. - 1/2" Thick base plate  
supported with 2" x 2" gussets



Note: A sign pole that looks like the styles selected can be substituted with approval of BDI. If an alternate is selected stamped engineering wind load calculations must be provided by the sign fabricator.

Key to wind stability is the bolt circle distance pattern.

#### Dent Breakaway Bolt

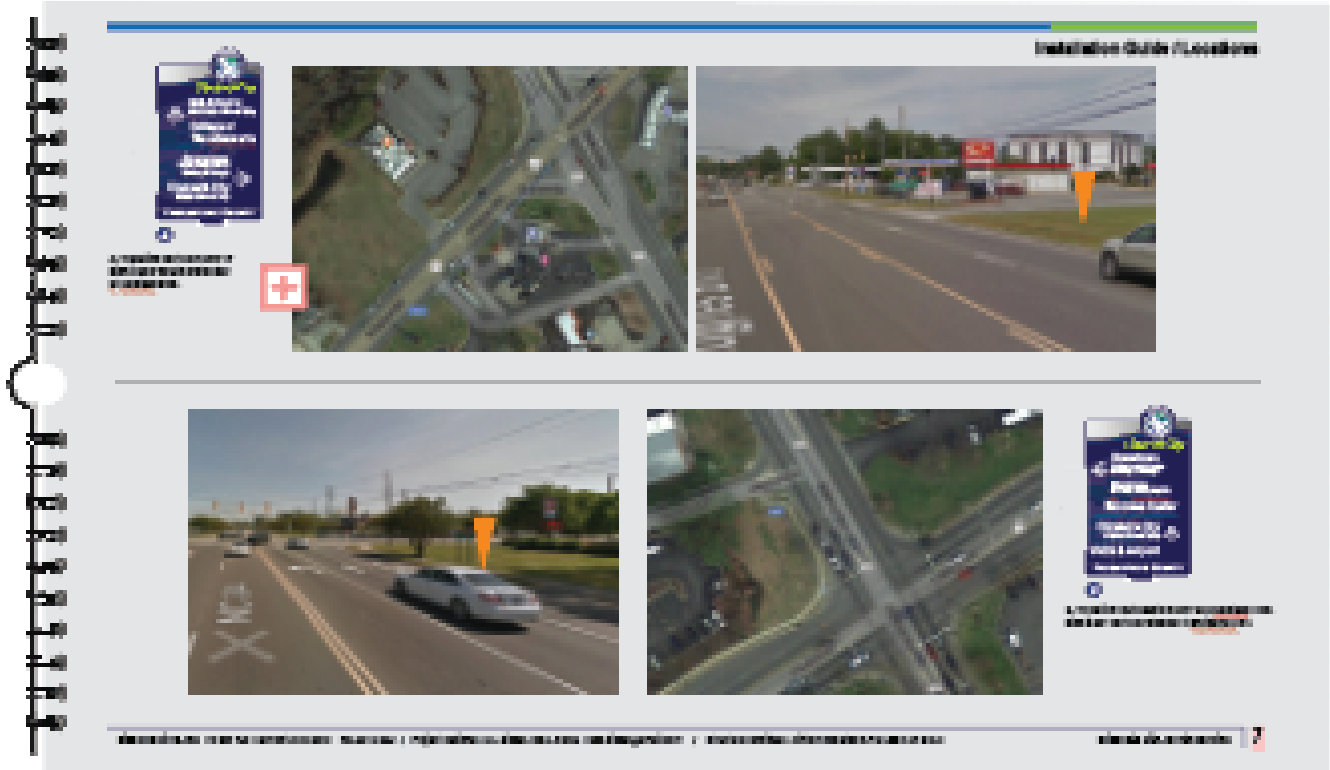


NCDOT approval and encroachment agreements are already in process and will be in place before the project is awarded. Each sign has fully developed messaging and directional arrows. BDI will provide full scale (ai) vector files for CNC cutting and for printing of each sign shape and size per specifications. These files will be used as templates for your final layout and shop drawing process.

All sign locations are identified by letter with directional messaging and layout in place. Map locations are noted for each sign location with approximate distances from stop lines or intersections. The street elevations are also included.



Each sign required has fully developed messaging and directional arrows.

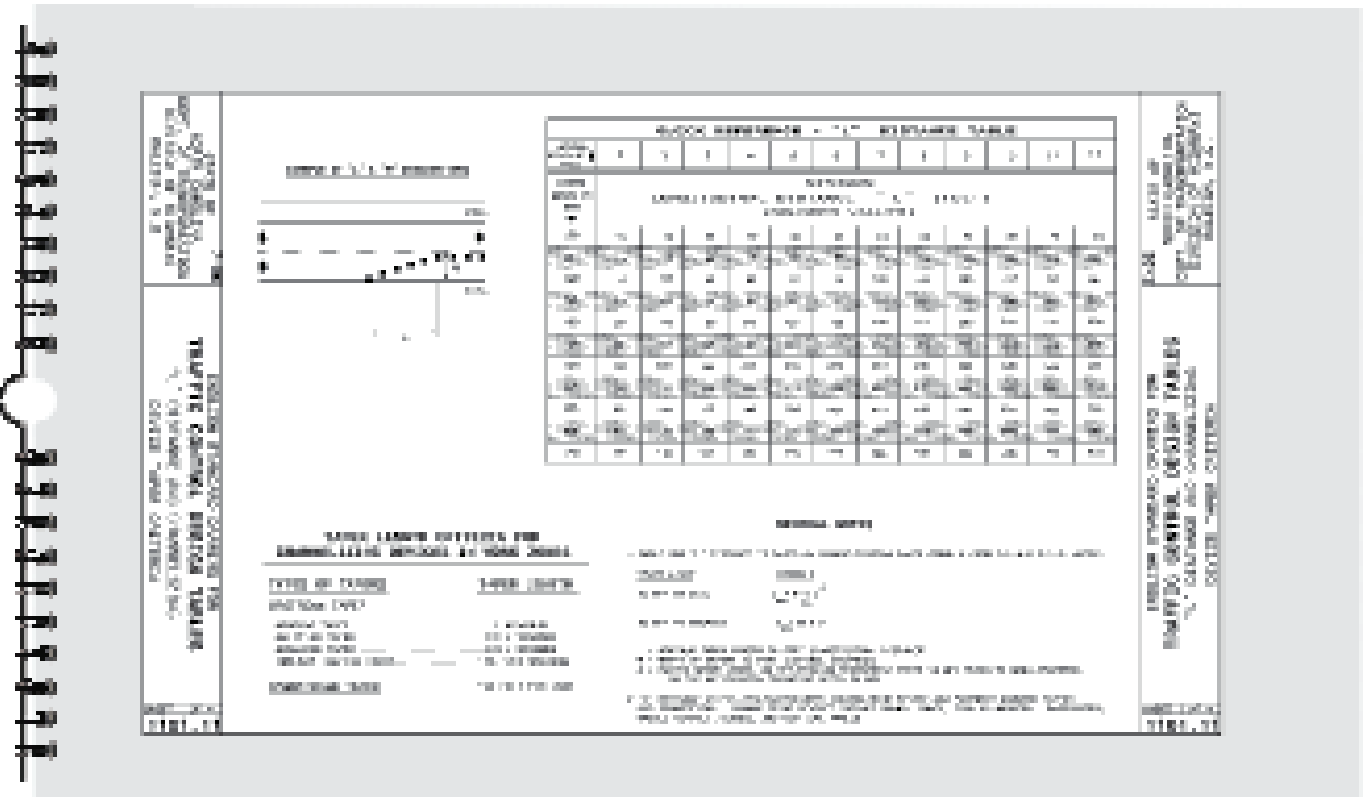
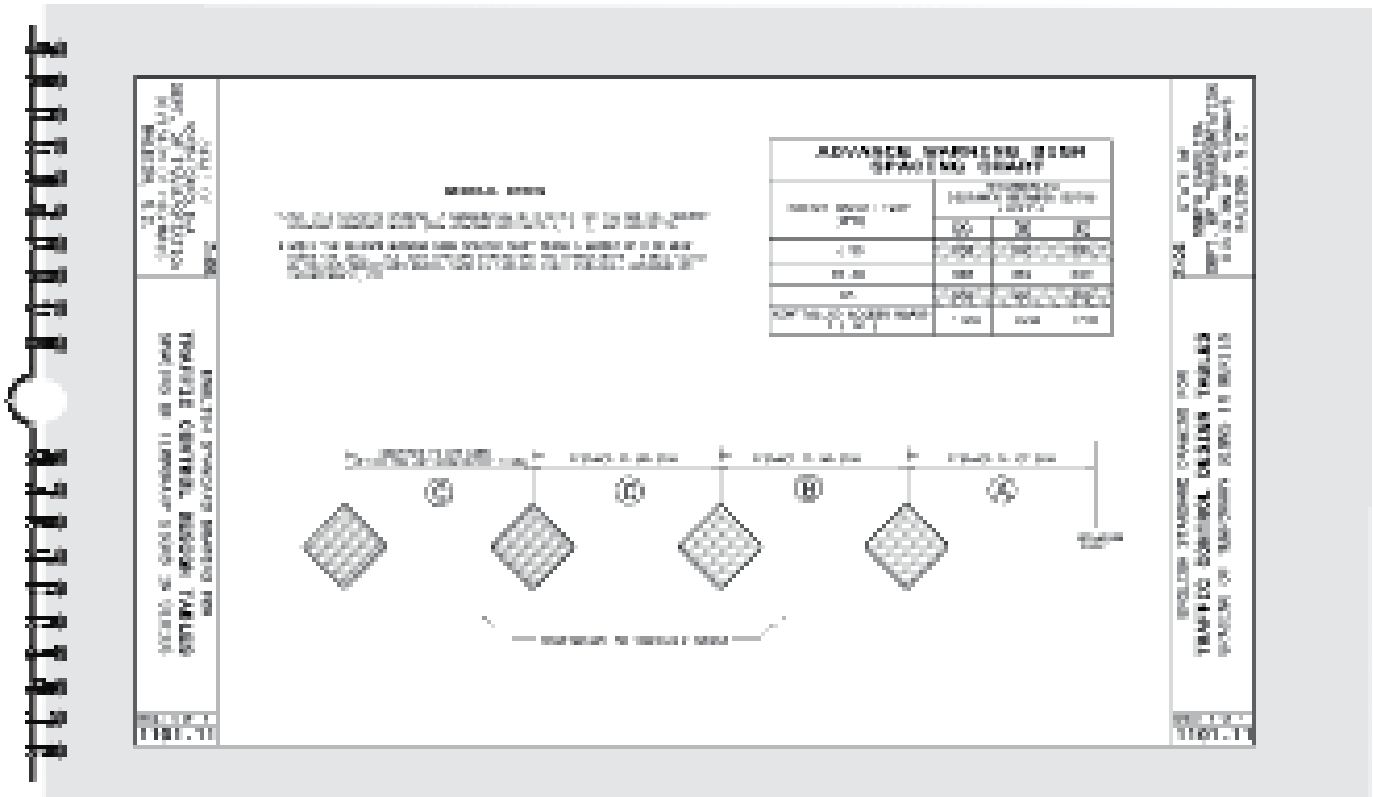
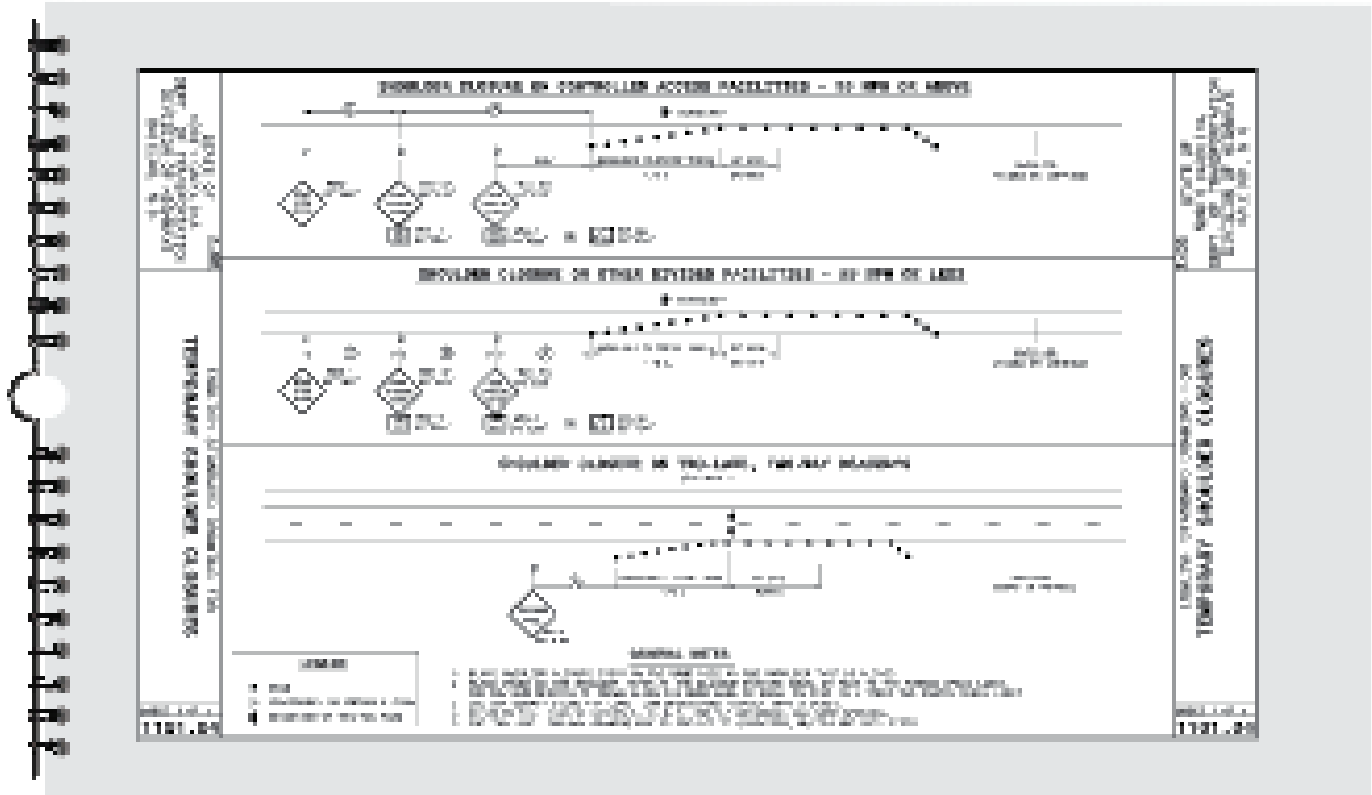


Each sign required has an exact location.



Each sign required has an exact location.

Safety and professional sign industry practices must be met regarding worksite management and traffic control. At a minimum, if trucks and equipment can be positioned off the road, warning cones must be placed. If it is necessary to block a travel lane use the following NCDOT instructions for lane closure management. This requires using live flag team if on a two way road.



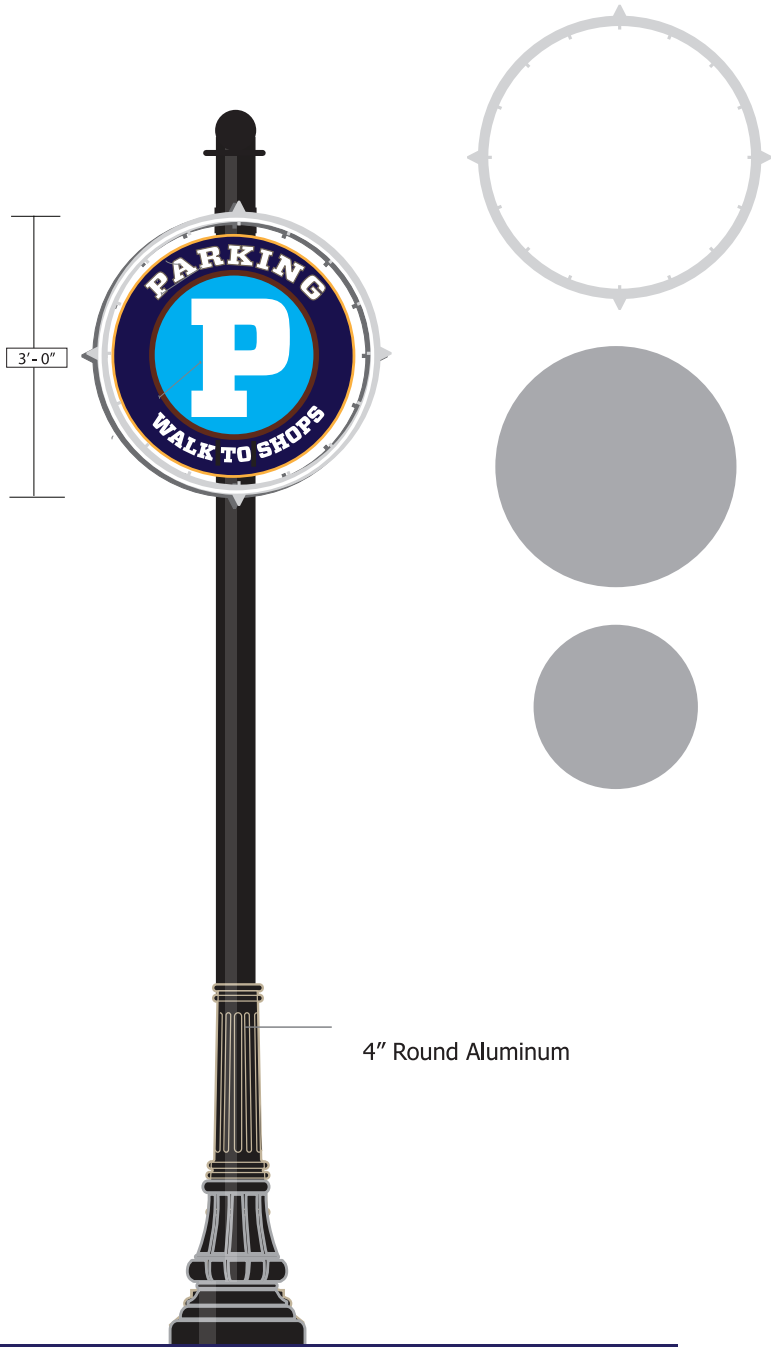
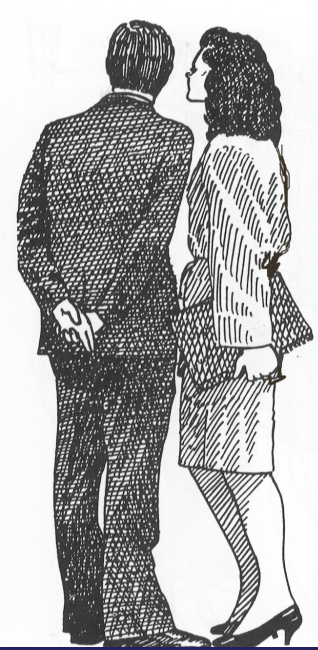


The Park signs coordinate with the wayfinding sign designs.

Note: The Mariners Wharf sign is single sided fabricated from 1/4" aluminum plate with 1/4" trim details. The 30" DIA. Elizabeth City Logo is a 1/2" fabricated Pan with vinyl graphics and a 1/4" CNC cut compass dial detail. The sign panel is supported with cast aluminum poles, decorative bases and direct buried 48" in concrete. The cross supports are 1.5" aluminum.



Note: The Waterfront Park sign is double sided fabricated from 2- 1/4" aluminum plate with 1/4" trim details. The 30" DIA. Elizabeth City Logo is a 1/2" fabricated Pan with vinyl graphics and a 1/4" CNC cut compass dial detail. The sign panel is supported with cast aluminum poles, decorative bases and direct buried 48" in concrete. The cross supports are 1.5" aluminum.



10 - Double Faced Signs Req.